

spanish

36

furniture, textiles, lighting

summer 2011

Pull up a chair

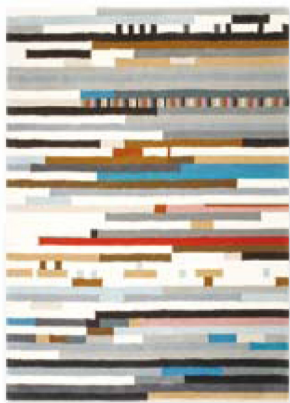
Enjoy a cornucopia of fabulous seating unveiled
at the Milan Furniture Fair



Inside:

EuroLuce review
Valencian designers
Company profiles

ENBLANC



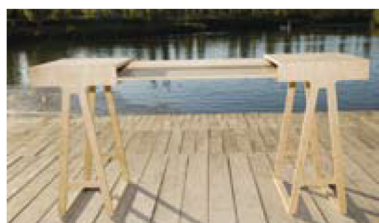
Top: Lepark rug for Gan **Below left:** X light for Ona

Enblanc is a genuinely multidisciplinary agency. The team comprises Amelia Arroquia, Carlos Velasco, Paula Aloy and José Aranda and together their skills encompass

graphic, product, space, multimedia and interior design. Gandía Blasco likes the analytical and strategic approach they bring to projects. They should go far!



LA MAMBA



Top: lloc desk **Above:** Pregnant vase **Below:** the six-strong, all-male team, that has already won several awards

La Mamba Studio is a group of six designers (it's an all-male ensemble but don't call them a boy-band...) who joined forces in 2009 after completing their masters degrees. They are Marcos Cifuentes, Ommar Uribe, Raul Durá, Pedro Rivera, Juan Gasca and Rafael Zaragozá, and they say their rationale is to develop 'friendly objects and useful products.' To do this, they study human behaviour so they can understand how people use or interact with

products. They have been making their presence felt by assiduously attending the key trade fairs such as Milan, Valencia, Stockholm and INDEX in Dubai.



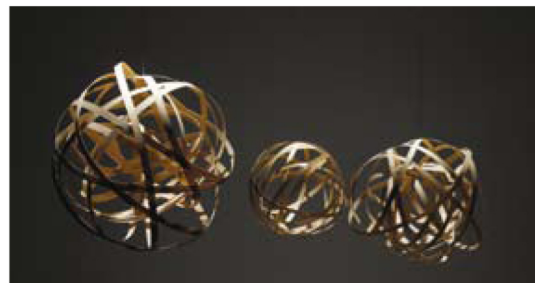
"Good is not a value in design, good design must be intrinsic to the product."

Borja García

MACALULA

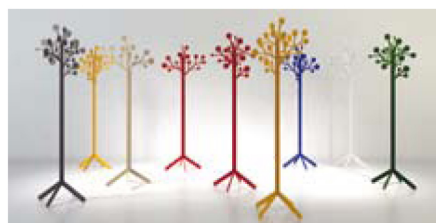


Above: Sachetto containers **Above right:** Vialis child's soft toy **Right:** Embolic pendant light for Ona



Macalula celebrate their fifth anniversary this year, and this all-women agency is going from strength to strength. Comprising Inelén Ortín, Estefania Narbón, Belén Moratalla and Cristina Planelles, their skills are complementary, with backgrounds in industrial, interior and graphic design, and fine arts. The team are doing more product design these days, having done predominantly 2d projects in the early days. Clients include Pau and Ona.

EDEESTUDIO



Left: colourful Spring metal coat stands for Imaginaierro **Below:** Urban chair for Capdell, which integrates sofa and armchair **Below left:** Hac cot for Micuna



Edeestudio was set up in 2008 by experienced interior designer Esther Albert and industrial designer Eduardo Alcón. Their work is varied, from furniture and lighting projects to graphic and interior design.

'We tend to work by firstly researching the needs and demands of a particular market and then making proposals to our clients for products that are innovative and functional and which address those needs,' says Esther. Clients include Capdell, Imaginaierro, ABD and cot maker Micuna.